



# **Mobile Inventory (mInv)**

## **User Manual**

# Introduction

---

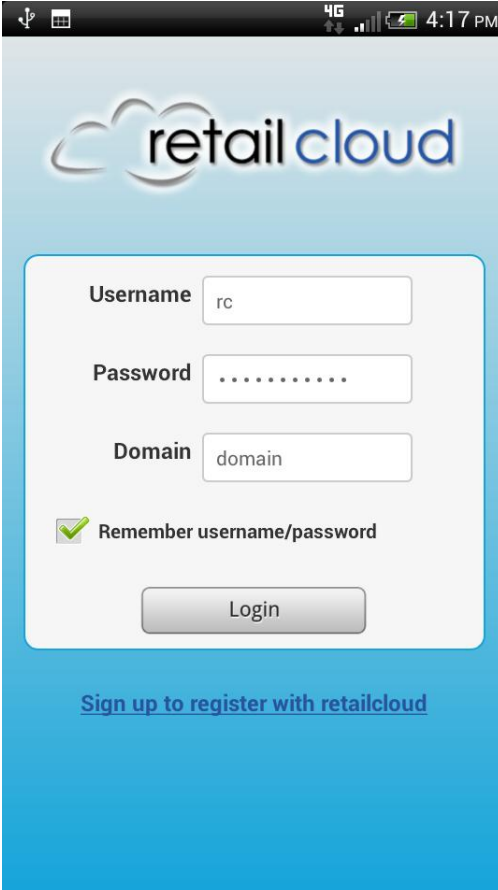
mInventory works on any Android device and allows the retailer to start adding and organizing inventory with the ease and convenience of using their own phone. Just scan the bar code and you are on your way.

The MInventory application makes collecting initial inventory a breeze. Scan the product UPC and save the details retrieved from the Master Database to the Merchant's Database. The device will show you what competitors are selling the products for which can be useful in staying ahead of the competition.

The Inventory Analysis reports provide insight into how effective your inventory is set up in terms of classifications. The better you have them set up, the better equipped you are to determine the right mix of product to satisfy your customers and bring in new ones.

## Login

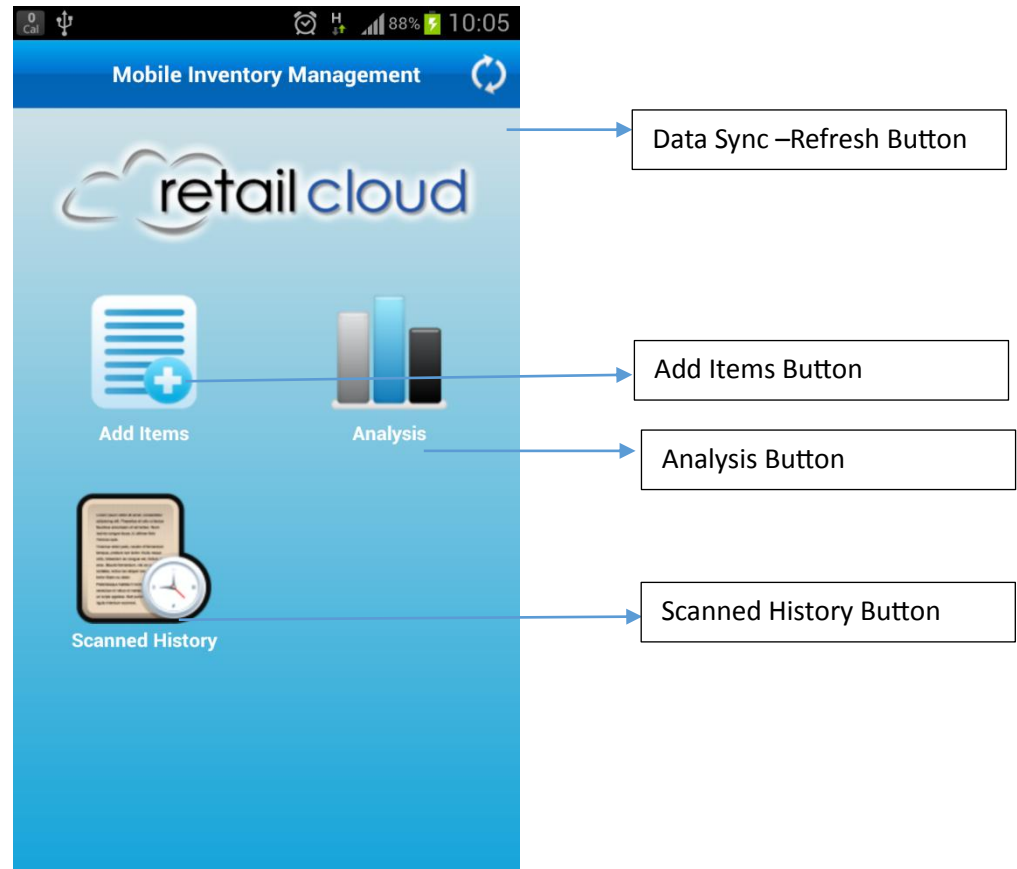
In order to access the application the user must be authenticated. The user inputs their login credentials along with the Domain name (Merchant name) that they want to access. If the user does not have a domain established, go to “Sign up to register with retailcloud” to establish an account.



The screenshot displays the Retailcloud mobile application's login interface. At the top, the status bar shows 4G connectivity and the time 4:17 PM. The Retailcloud logo is centered at the top of the screen. Below the logo is a white login form with a blue border. The form contains three input fields: 'Username' with the value 'rc', 'Password' which is masked with dots, and 'Domain' with the value 'domain'. Below these fields is a checked checkbox labeled 'Remember username/password'. A 'Login' button is positioned at the bottom of the form. Below the form, there is a blue link that reads 'Sign up to register with retailcloud'.

## Home Screen

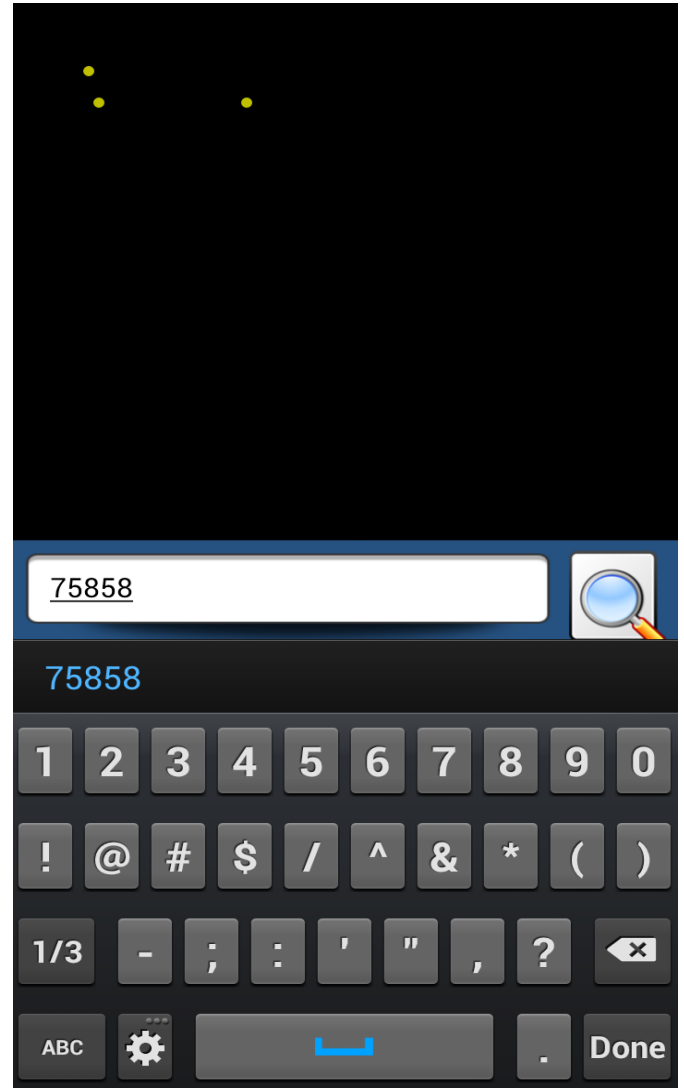
From the Home screen, the User selects which function they wish to access or perform. The functionality of each icon is detailed below:



- a. **Add Items:** From this screen, the user can scan the barcode /UPC of the product and get the information from the Master database or from Google. For items with unique or unknown UPC codes. Once saved, these items are in the merchant database and can be accessed from the CAS or other registers at the store.
- b. **Analysis:** This provides an analysis of the inventory to suggest considering merging classifications (departments, categories, and sub categories) to form optimal groups to better manage the data.
- c. **Scanned History:** This shows a list of items scanned by the devices. This is device specific and sorted by date entered.
- d. **Refresh/Data Sync:** The Data Sync will take place to sync product items, departments, categories, sub-categories, color, Vendor, Season, and Brand which were added or modified with the local database.

## Add Item Screen

The add items button allows the user to scan the product UPC. If the item is not in the database, the user can manually enter the UPC in the “Enter UPC” box provided and click search icon.



When the UPC is entered, the Master Database is searched for the UPC. If the search is successful then the details of the Product UPC is displayed .If the UPC Is not present in either Master database or in the Google Shopping Database then the user can manually enter the product details.

## Product Details:

The Product Details Screen shows the details of the product such as an image of the product (if available), product title (description), price, department, category, sub category, brand, style, season, size, color, and vendor.

Product Details  
1 of 10

UPC\* 68686

Title\* Lorell 68600 Series Rectangula

Price\* 284.82

Department\* General

Category\* Dental

Sub Category\* Ipad

Brand Sea Gull Lighting

Style Accessories

Add a new attribute or classification

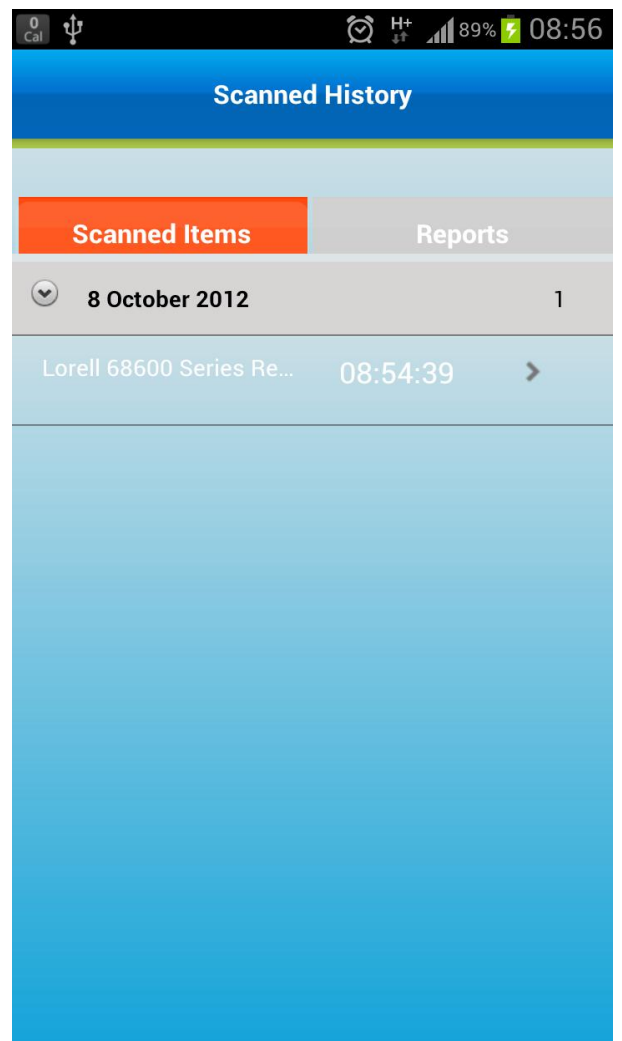
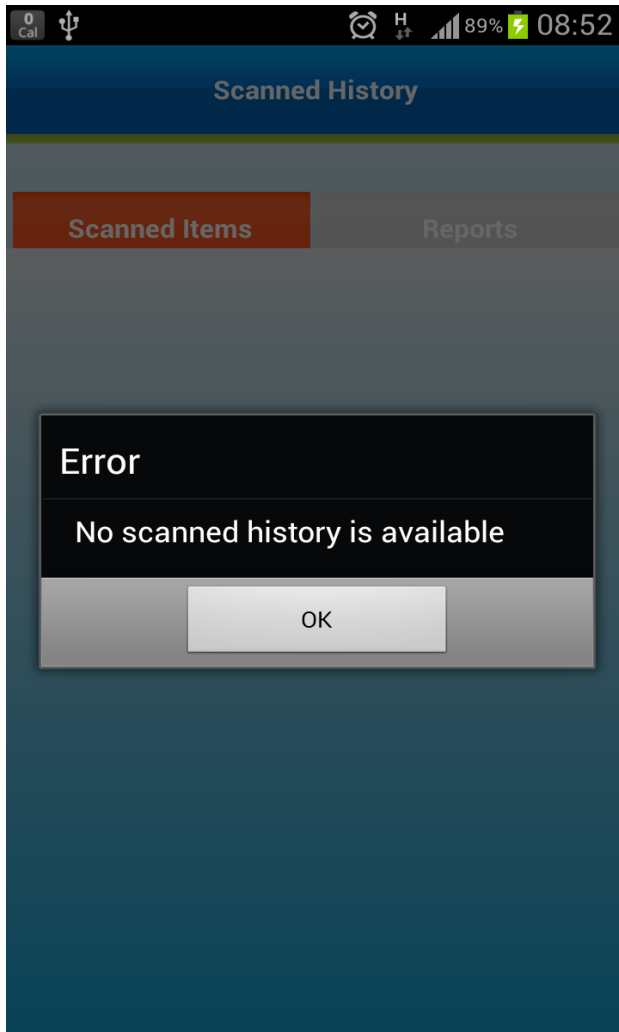
Drop down of existing attributes and classifications

**Add Attribute/Classification:** This icon will add the corresponding field item into the database if it does not already exist. To add "Department1" into the merchant database, the user can enter the value in the field and press the "Add Attribute/Classification" icon. If successful, the user receives the message "Department1 successfully created" or in the case of failure "Department1 already exist in database".

**List Item:** The user selects the attribute or classification already created from the dropdown selection.

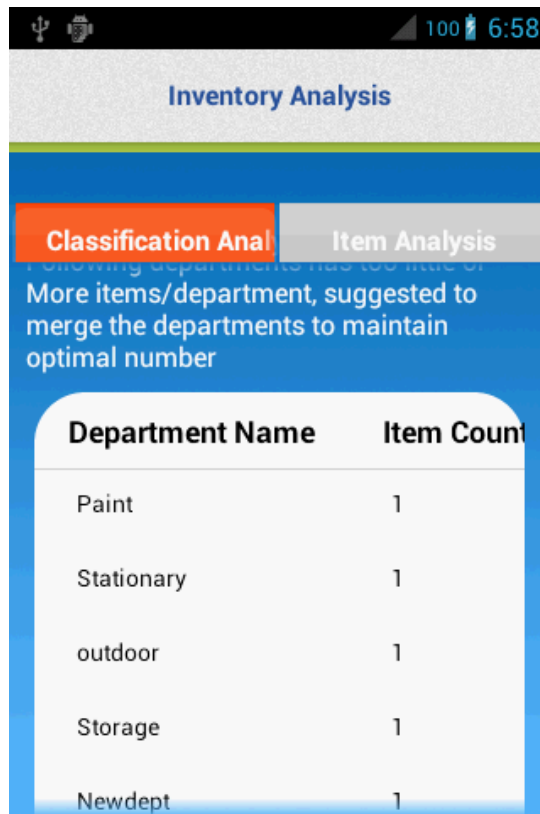
## Scanned History:

This screen shows the list of items scanned and saved successfully. The saved items are categorized based on the date scanned. This is an expandable list which can expand/collapse to display full details.





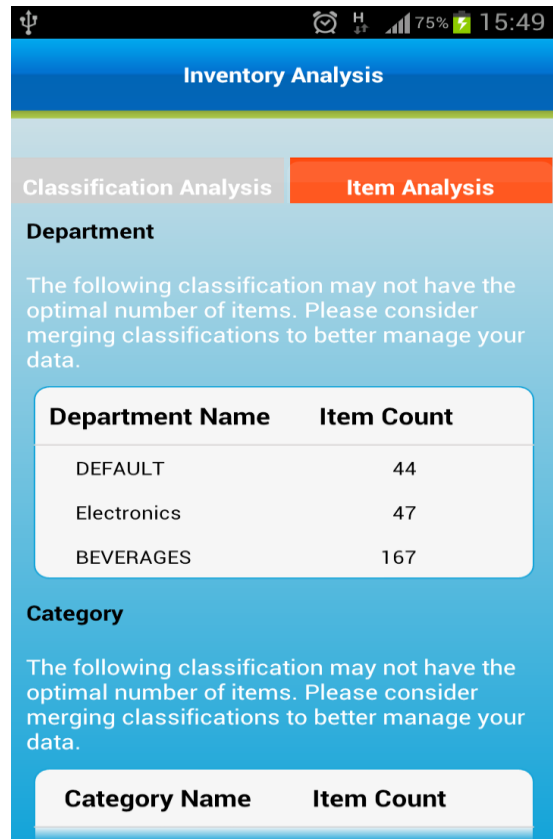
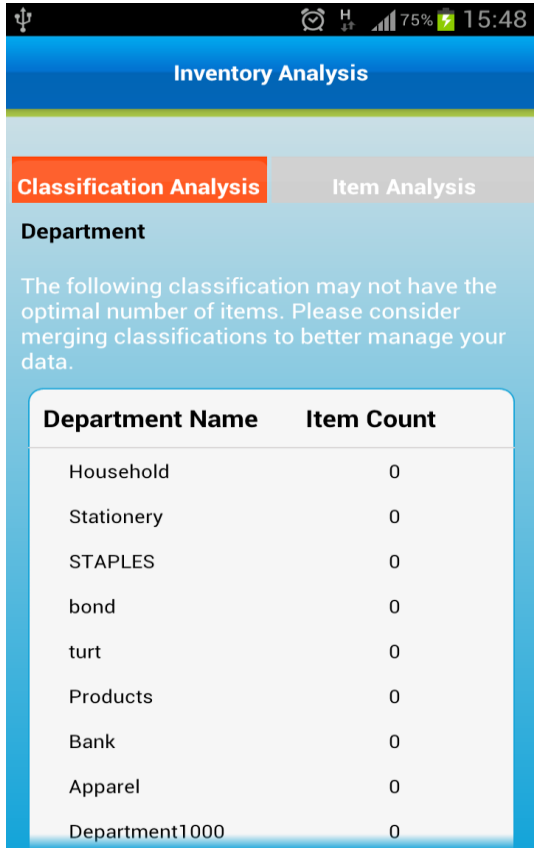
## Inventory Analysis:



Department Name	Item Count
Paint	1
Stationary	1
outdoor	1
Storage	1
Newdept	1

The Inventory Analysis screen provides the option of accessing the Classification Analysis screen or the Item Analysis screen.

This tool helps the merchant determine if the classifications are optimal. Having well structured classifications allow for reports and features to produce results that can be used to make changes to better the operation; ranging from department specific promotions and customer group specials or discontinuing slow moving items.



From the Clasification Analysis screen , the user sees the departments, categories, and sub categories that may need to be merged in order to maintain the optimal classification of each classification.

The Item Analysis screen approached the analysis based on items within the classifications.

## Technical Specification:

1. Android version Required : Android 2.2 and above
2. User Permission Required
  - a. HARDWARE CONTROLS - TAKE PICTURES AND VIDEOS

Allows the app to take pictures and videos with the camera. This allows the app at any time to collect the images the camera is seeing.

- b. NETWORK COMMUNICATION - FULL INTERNET ACCESS

Allows the app to create network sockets.

- c. STORAGE - MODIFY/DELETE USB STORAGE CONTENTS MODIFY/DELETE SD CARD CONTENTS

Allows the app to write to the USB storage. Allows the app to write to the SD card.

Known Issue: For OS Gingerbread, when scanning multiple items, the first items name (Title), price, and brand is retained on subsequent scans.